



GUANGZHOU SM SCAFFOLDING



COMPANY PRESENTATION



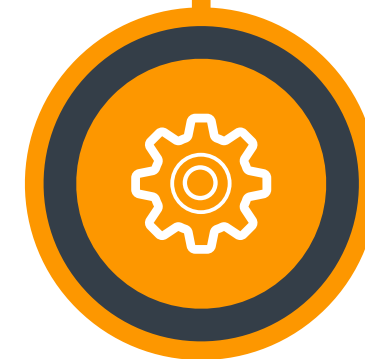
Presentation Content



01. Company Introduction



02. Our Factory



03. Products



04. Projects



04. Certificates

✔ Guangzhou SM Scaffolding is specialized In the production and development of Scaffolding systems, for more than 30 years.

✔ Guangzhou SM Scaffolding has a complete management system on product quality control being certified with ISO9001:2008



Established
1986



**Factory
Area**
40.000m2



Employees
1300



**Production
capacity**
100ton/day



COMPANY HISTORY

1986

Guangzhou Shuangma Steel Template Co., Ltd. was founded in 1986. The company has been undertaking the ship repairing and building projects from government owned shipyard companies in south of China more than 30 years.



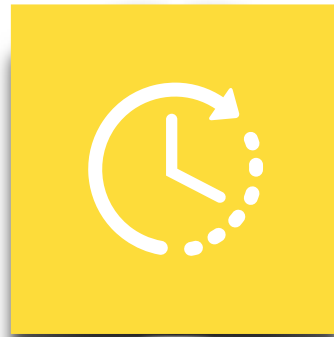
1991

In 1991, Shuangma started a heavy duty lifting project.



1996

In 1996, Shuangma launched the engineering project of painting and scaffolding erection.



2008

In 2008, the first scaffolding factory in Guangzhou Zengcheng area was built and came into operation.



1989

In 1989, Shuangma launched projects in marine pipeline construction.



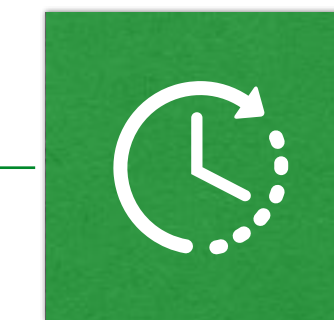
1994

In 1994, Shuangma completed the repairing project for the heavy sea-damaged ship of "Achilles II".



2002

In 2002, Shuangma developed the business of scaffolding and employed about 1,300 staffs.



2015

In 2015, the brand new factory of 40,000 square meters went into production.



COMPANY OVERVIEW



**Factory
overview**



**Office
Building**



**Office
Lobby**

OUR WORKSHOP

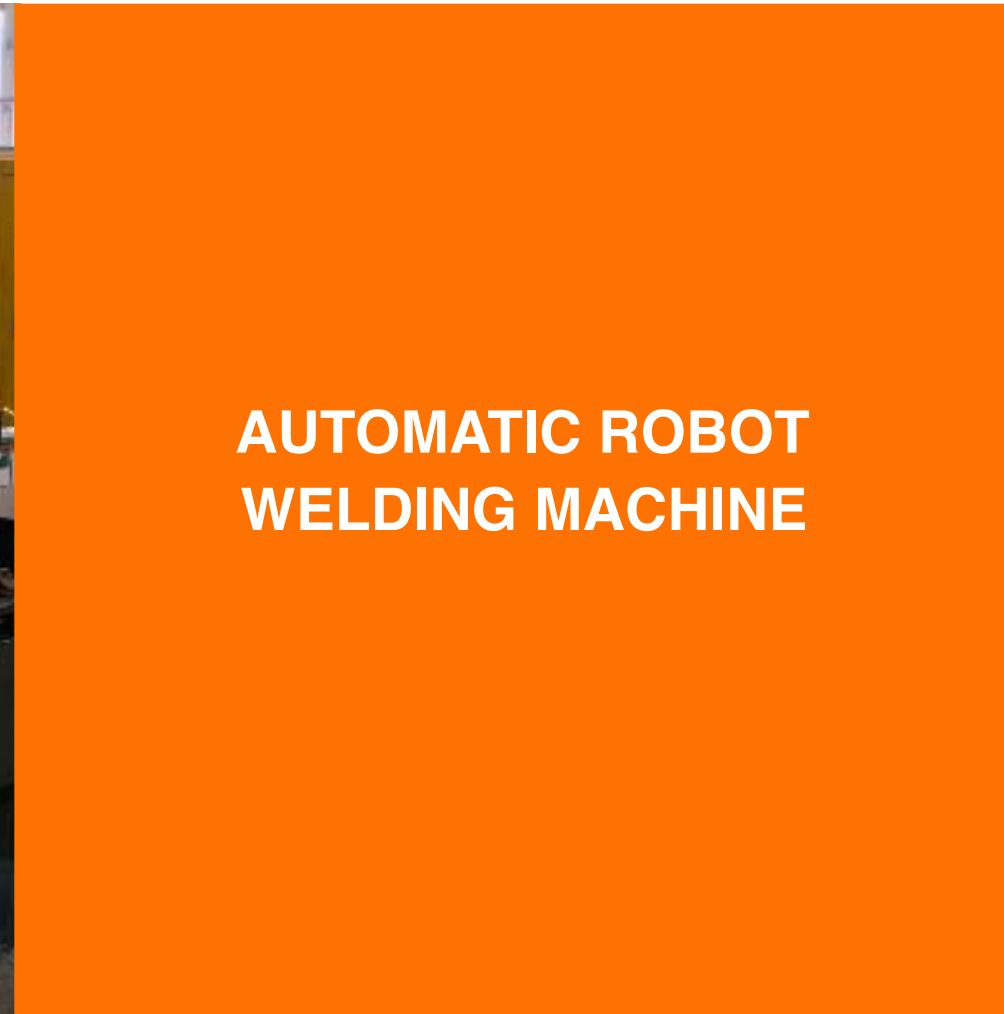


OUR MACHINES

STANDARD
AUTOMATIC WELDING
MACHINE



AUTOMATIC ROBOT
WELDING MACHINE



STEEL PLANK
PROFILE MACHINE



LEDGER AUTOMATIC
WELDING MACHINE



LEDGER AUTOMATIC
WELDING MACHINE



OUR MACHINES

AUTOMATIC MESH
MACHINE



PIPE SHRUNKEN
PRESS MACHINE



STEEL PROP
DRILLING MACHINE



AUTOMATIC PROFILE
CUTTING MACHINE



THREADING MACHINE



MAIN PRODUCTS



RINGLOCK SCAFFOLDING



FRAME SCAFFOLDING



STEEL PROPS



KWIKSTAGE SCAFFOLDING



CUPLOCK SCAFFOLDING



CROSS LOCK SCAFFOLDING



FORMWORK

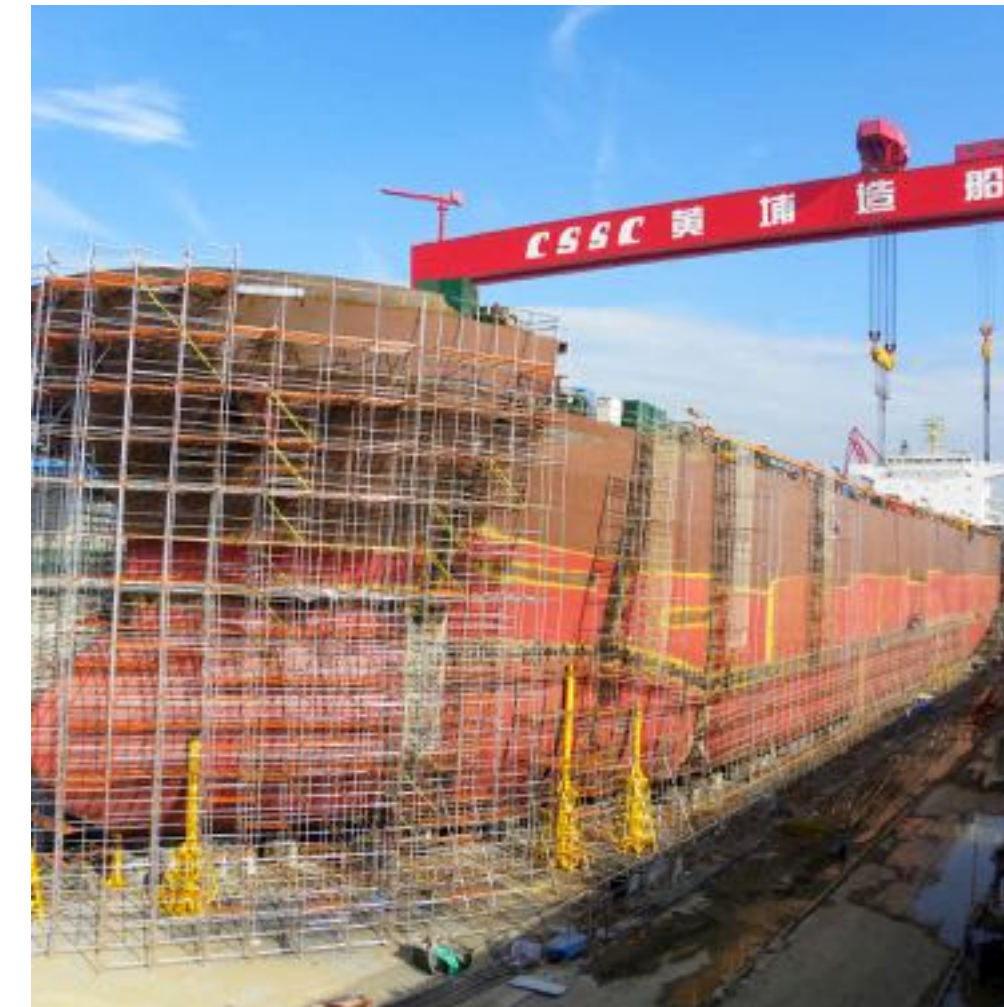
SHIPYARD PROJECTS



HYUNDAI SHIP REPAIR



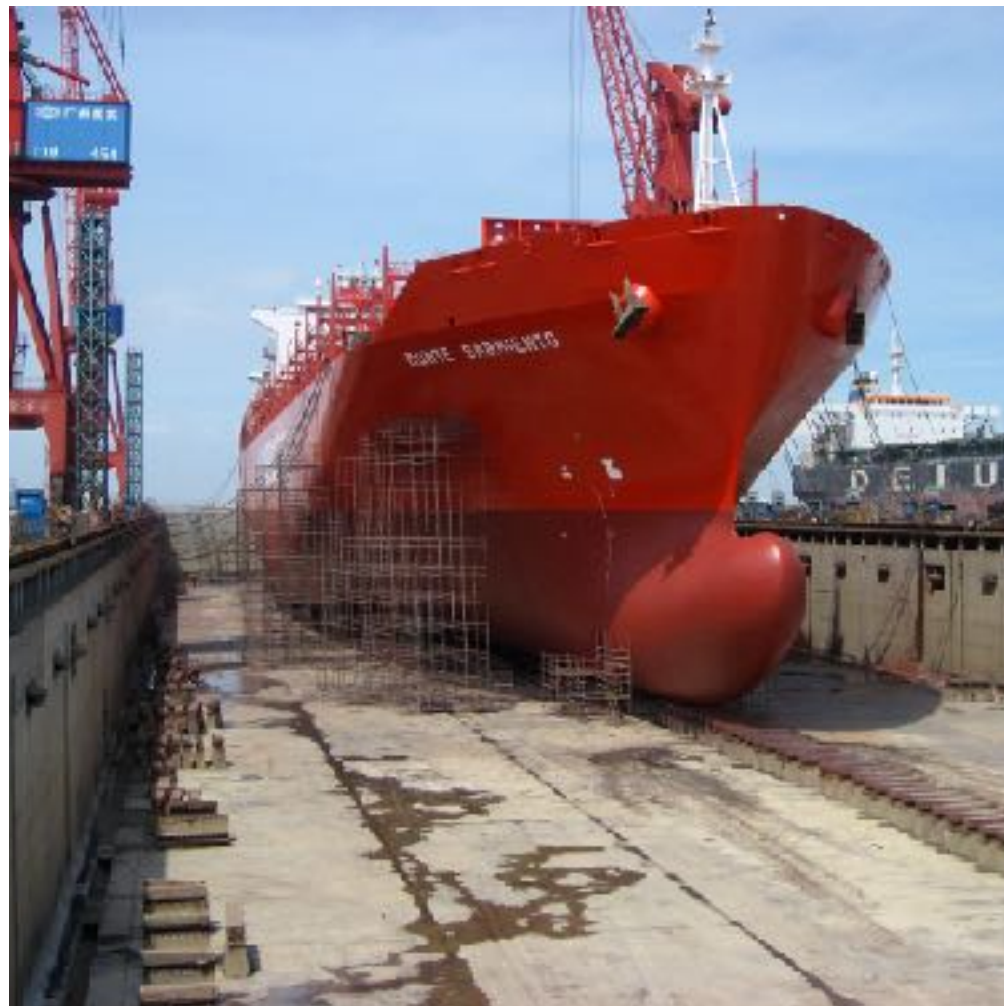
KONSTANTINOS SHIP REPAIR



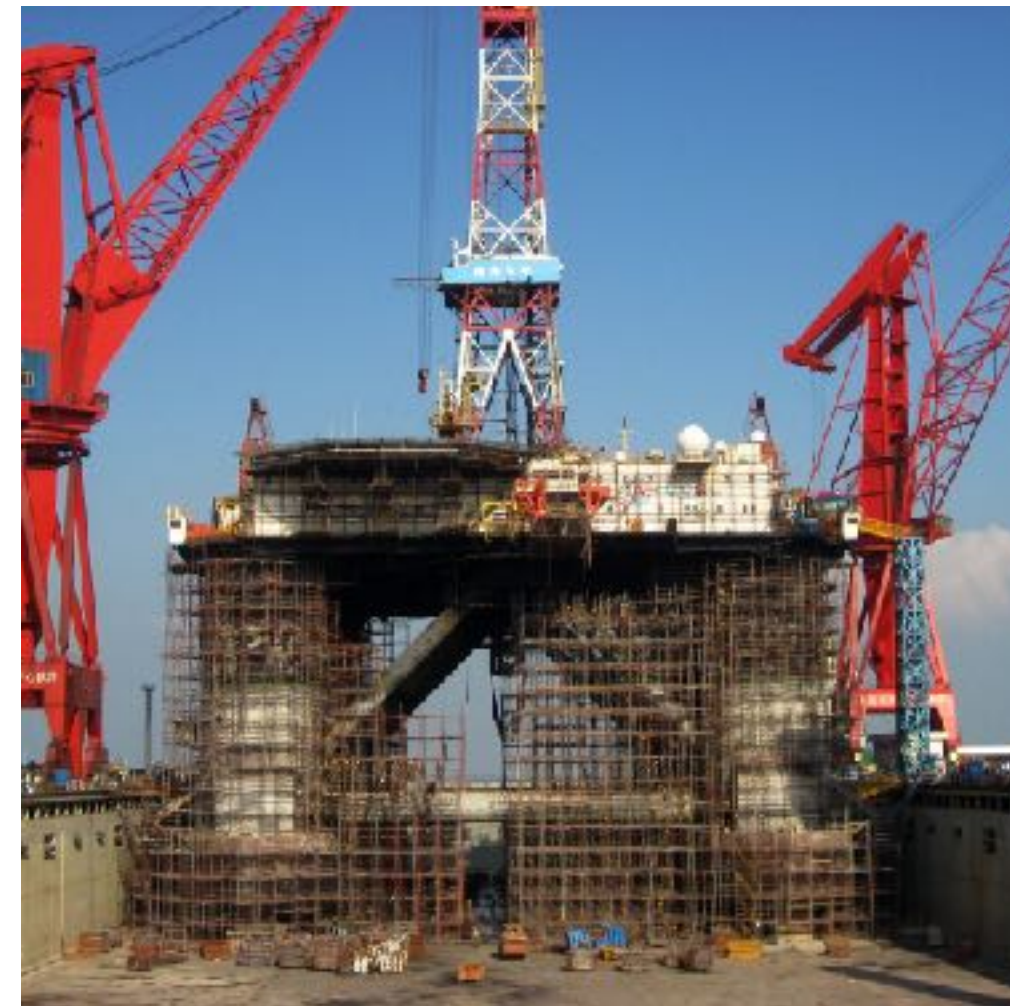
FPSO SHIP REPAIR (OFFSHORE)



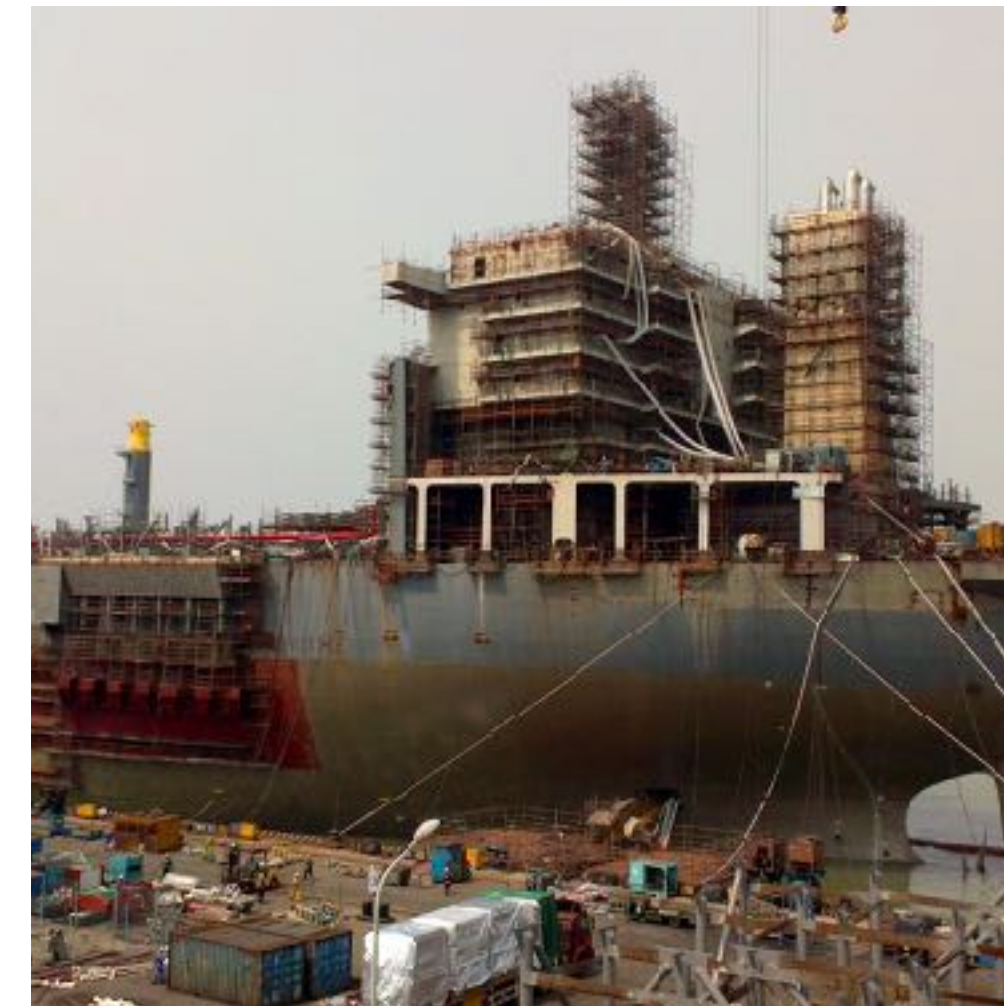
SINOTRANS & CSC SHIP REPAIR



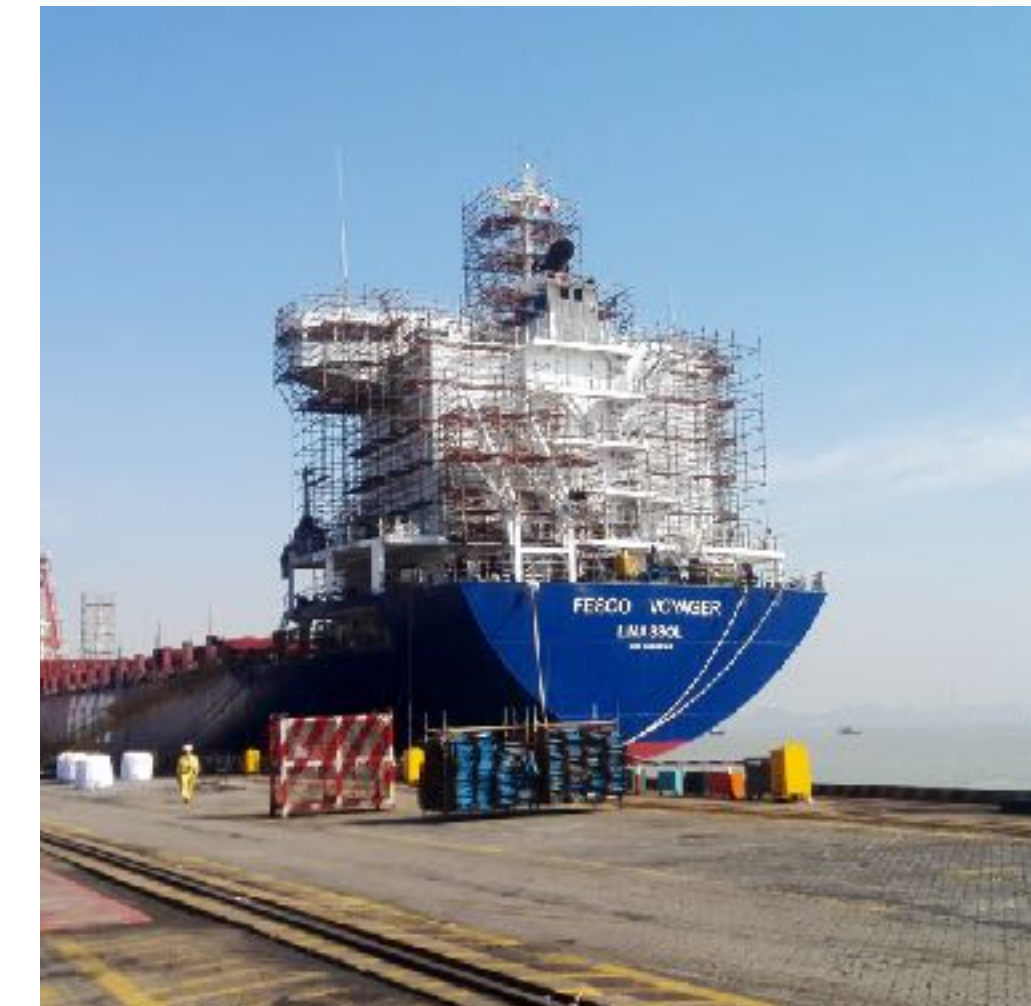
MONTE SARMIETO SHIP REPAIR



NANHAI No5 SHIP REPAIR (OFFSHORE)



COSCO SHIP REPAIR



FESCO VOYAGER REPAIR

BRIDGE PROJECTS



COOPERATION WITH CREC IN GUANGZHOU



COOPERATION WITH CSCEC IN DONGGUAN



COOPERATION WITH CREC IN HUIZHOU



COOPERATION WITH CREC IN ZENGCHENG



COOPERATION WITH CCC IN HK&MACAU BRIDGE



COOPERATION WITH CRCC IN SHENZHEN

BUILDING PROJECTS



COOPERATION WITH SANJIAN GROUP IN FOSHAN PROJECTS



RINGLOCK SLAB SUPPORT IN PHILIPPINES



RINGLOCK PLATFORM IN CHILE



RINGLOCK SHUTTERING SUPPORT IN BANGLADESH



RINGLOCK SHUTTERING SUPPORT IN SHENZHEN

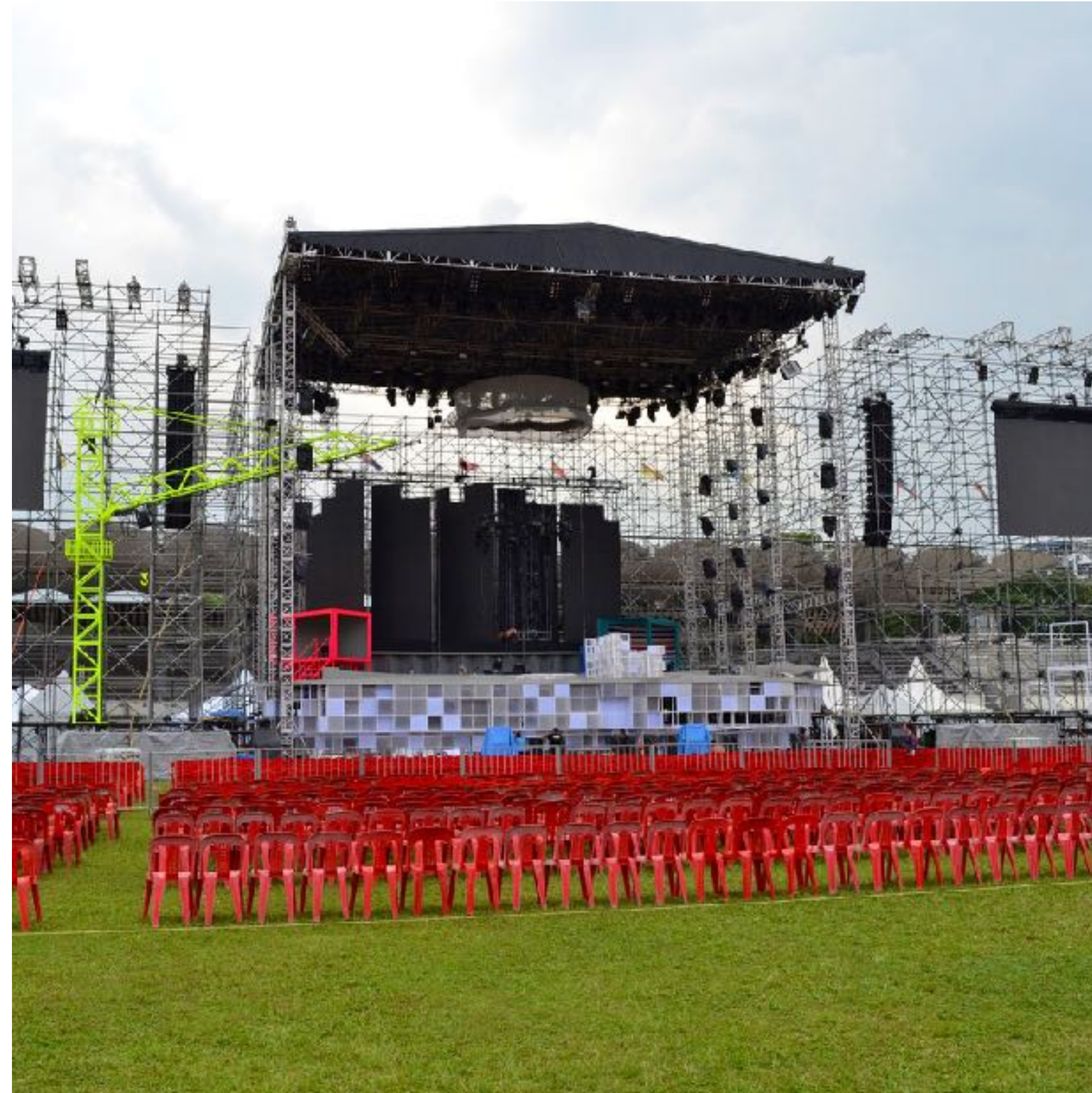


RINGLOCK SHUTTERING SUPPORT IN KENYA

STAGE PROJECTS



EASON CHEN CONCERT



JACKY CHEUNG CONCERT



JAY CHOU CONCERT

OTHER PROJECTS



STEEL PROPS SHUTTERING SUPPORT



FRAME SCAFFOLD SHUTTERING SUPPORT



RINGLOCK TOWER SYSTEM

OUR CERTIFICATES



INTERTEK EN12801



ISO 9001:2008



SGS LEDGER TEST



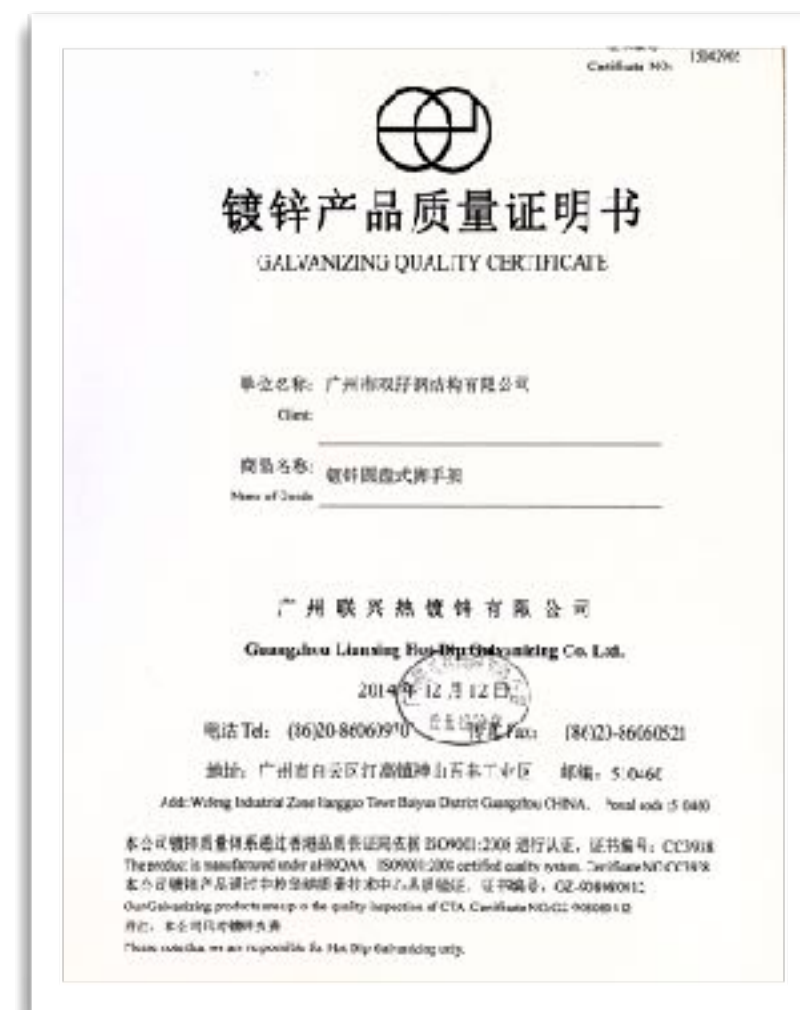
SGS PLANK TEST



SGS STANDARD TEST



SGS STEEL PROP TEST



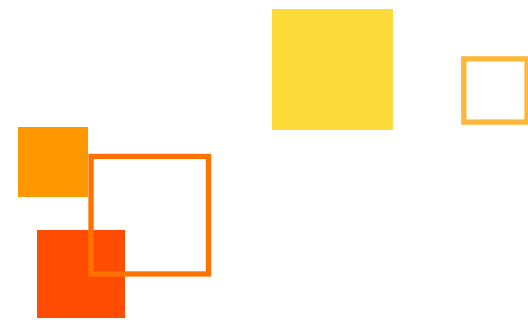
GALVANIZE CERTIFICATE



GQT TEST REPORT

WELDING LICENSES





Contact Us

Manager



Jenny Zhu

◆ **Phone**

Mobile / WeChat / Whatsapp: +86 13929167272

◆ **Address**

No.33 Xiaxi Alley
Xiafu Road, Zhongxin Town, Guangzhou

◆ **Social Media**

www.linkedin.com/in/jennysmscaffolding
www.facebook.com/shuangmascaffolding/

